

**BREVARD COUNTY, FLORIDA
ANNUAL OPERATING AND CAPITAL BUDGET
FOR FY 2017-2018**





GOVERNMENT FINANCE OFFICERS ASSOCIATION

*Distinguished
Budget Presentation
Award*

PRESENTED TO

**Brevard County
Florida**

For the Fiscal Year Beginning

October 1, 2016

Executive Director

INTRODUCTION

HOW TO READ AND USE THIS BUDGET DOCUMENT

The Adopted Budget for Brevard County for the Fiscal Year 2017-2018 includes the following major components:

The Budget Message

The Budget Message provides an overview of the Budget, highlights the County's response to the needs of the community and the direction provided by the Board of County Commissioners, and other factors affecting the development of the Budget.

General Information

This section provides general and historical information about the County and its budgets plus basic information about property. A description of the budget preparation philosophy and process, historical information, descriptions of the services provided, and a description of the budget structure and governmental (fund) accounting are included.

Budget and Financial Policies

The Budget and Financial Policies adopted by Brevard County, Board of County Commissioners are provided here.

Financial Indicators and Major Revenues

Brief historical summaries of key financial indicators based on the County's Comprehensive Annual Financial Reports are presented here. Additionally, brief descriptions and histories of the County's major sources of revenue are included.

Budget Summaries

The County's total budget is summarized by revenue sources, appropriations by category, and fund. Also included are Budgeted Employee Positions and charts depicting the summaries.

Department, Office, and Agency Budgets

Included in each segment is an organizational/functional chart of each department, office or agency. This is followed by a Departmental Summary, which provides an overview of the Department's mission and budget and a list of the programs provided by the agency. A summary of the Department's budget is followed by Program Profiles of the various programs which comprise the departmental operations. Included in the Program Profile is a summary of the budget for that program and a listing of the major services included in the program. Also included are performance measures, major service level impacts (if any), listings of proposed travel, capital outlay and budgeted capital improvement projects.

The various departments, offices or agencies are presented in alphabetical order within several broad categories which include: *Board of County Commissioners* directed agencies; the operating agencies which comprise the *Charter Officers* of the County; the operating entities which comprise the County-funded portion of *Court Operations*; and the *Outside Agencies* which comprise the subordinate component units of the County government of Brevard County, Florida, as well as those private agencies which provide services which might otherwise be direct functions of the County.

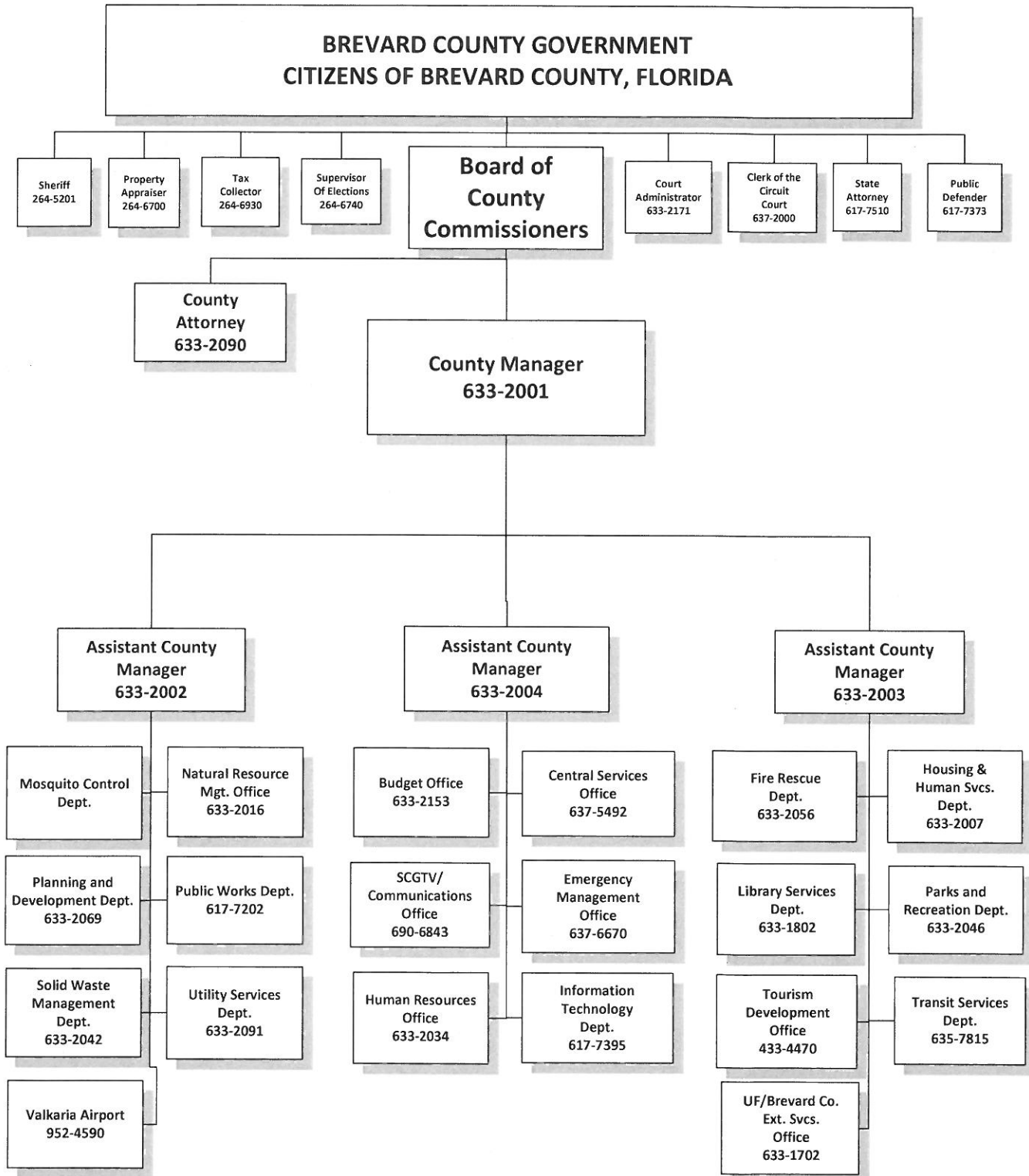
Capital Improvement Program

The County's detailed CIP is provided here.

Appendices

The appendix includes a Glossary of Terms and Florida Statute citations.

INTRODUCTION



INTRODUCTION

**BREVARD COUNTY
GOVERNMENT**

COUNTY OFFICIALS



BOARD OF COUNTY COMMISSIONERS

Rita Pritchett, Chair District 1
Kristine Isnardi, Vice-Chair District 5
Jim Barfield District 2
John Tobia District 3
Curt Smith District 4

CHARTER OFFICERS

Scott Ellis Clerk of the Circuit Court
Dana Blickley Property Appraiser
Wayne Ivey Sheriff
Lori Scott Supervisor of Elections
Lisa Cullen Tax Collector

STAFF

Frank Abbate County Manager
Scott L. Knox County Attorney

INTRODUCTION

ACKNOWLEDGEMENTS

Special recognition should be given to the following for their efforts in the development and preparation of the FY 2017-2018 Budget for Brevard County, Florida:

The Board of County Commissioners, for their continuous involvement in and direction of the budget process.

Frank Abbate, County Manager and County Budget Officer, for his direction and support.

Assistant County Manager John Denninghoff and Assistant County Manager Jim Liesenfelt, for their early participation and efforts within their areas of control.

Department Directors, Agency Managers, Charter Officers and their Staffs, for their efforts in the development of their respective portions of this budget.

The Clerk Finance Department, for technical information and assistance.

The Current Budget Office Staff

Jill Hayes	Budget Director
Constance Lea	Management and Budget Analyst
Karen Petters	Management and Budget Analyst
Chelsea Rollyson	Management and Budget Analyst
Pamela Wallace	Special Projects Coordinator
Kathy Wall	Special Projects Coordinator